

JAMA Psychiatry

Research

Original Investigation

747 Altered Markers of Cortical γ -Aminobutyric Acid Neuronal Activity in Schizophrenia: Role of the NARP Gene
S Kimoto and Coauthors

757 Epidemiology of DSM-5 Alcohol Use Disorder: Results From the National Epidemiologic Survey on Alcohol and Related Conditions III
BF Grant and Coauthors

767 Increased Functional Connectivity Between Subcortical and Cortical Resting-State Networks in Autism Spectrum Disorder
L Cerliani and Coauthors

778 Neurobiology of Sensory Overresponsivity in Youth With Autism Spectrum Disorders
SA Green and Coauthors

787 Familial Risks of Tourette Syndrome and Chronic Tic Disorders: A Population-Based Cohort Study
D Mataix-Cols and Coauthors

794 Serotonin Synthesis and Reuptake in Social Anxiety Disorder: A Positron Emission Tomography Study
A Frick and Coauthors

803 Association of IQ Changes and Progressive Brain Changes in Patients With Schizophrenia
M Kubota and Coauthors

813 Spontaneous Gamma Activity in Schizophrenia
Y Hirano and Coauthors

822 Long-Acting Injectable Risperidone for Relapse Prevention and Control of Breakthrough Symptoms After a Recent First Episode of Schizophrenia: A Randomized Clinical Trial
KL Subotnik and Coauthors

830 Efficacy and Safety of the 3-Month Formulation of Paliperidone Palmitate vs Placebo for Relapse Prevention of Schizophrenia: A Randomized Clinical Trial
J Berwaerts and Coauthors

Opinion

Editorial

743 Resting-State Functional Connectivity in Psychiatric Disorders
ND Woodward and CJ Cascio

745 Expanding Therapy With Long-Acting Antipsychotic Medication in Patients With Schizophrenia
WT Carpenter Jr and RW Buchanan

Clinical Review & Education

Special Communication

840 Neural Oscillations and Synchrony in Brain Dysfunction and Neuropsychiatric Disorders: It's About Time
DH Mathalon and VS Sohal

Neuroscience and Psychiatry
845 Serotonin States and Social Anxiety
MB Stein and AM Andrews

Continuing Medical Education
856 Online Quiz Questions

LETTERS

Comment & Response

848 Addressing Depression and Suicide Among Physician Trainees
849 Abuse-Deterrent Formulations of Prescription Opioids

Issue Highlights and Continued Contents on page 741



Research

Epidemiology of DSM-5 Alcohol Use Disorder 757

Alcohol use disorder, one of the most prevalent mental disorders worldwide, was reclassified in the *DSM-5*. Grant and colleagues used the National Comorbidity Survey Replication to present the epidemiology of *DSM-5* alcohol use disorder. Twelve-month and lifetime prevalences of alcohol use disorder were 13.9% and 29.1%, respectively. Only 19.8% of respondents with lifetime alcohol use disorder were ever treated. Significant associations were found between alcohol use disorder and other mental disorders, especially bipolar, major depressive, and personality disorders.

Neurobiology of Sensory Overresponsivity in Youth With Autism 778

More than half of youth with autism spectrum disorders (ASDs) experience an extreme negative reaction to sensory stimuli. Green and colleagues studied this sensory overresponsivity in 19 high-functioning youths with ASDs and 19 matched healthy control participants with functional magnetic resonance imaging. During exposure to sensory stimuli, youths with ASDs displayed stronger activation in primary sensory cortices and the amygdala, which was correlated with sensory overresponsivity symptoms. While youths with ASDs with sensory overresponsivity showed decreased neural habituation, those without sensory overresponsivity showed a pattern of amygdala downregulation.

Serotonin Synthesis and Reuptake in Social Anxiety Disorder 794

Social anxiety disorder has been associated with abnormalities of the serotonergic system. Frick and colleagues used positron emission tomography to study serotonin synthesis and reuptake in 18 patients with social anxiety disorder and 18 matched healthy control individuals. They reported higher rates of serotonin synthesis and/or transporter availability in several brain regions, including the amygdala and raphe nuclei. The rate of serotonin synthesis was correlated positively with social anxiety symptoms. In a *Neuroscience and Psychiatry* article, Stein and Andrews discuss serotonin states and anxiety.

Related Article 845

Long-Acting Injectable Risperidone and Schizophrenia 822

Long-acting injectable antipsychotic medications have not been studied following the first episode of schizophrenia. In a randomized clinical trial, Subotnik and coauthors randomized 83 patients with recent onset of schizophrenia to long-acting injectable or oral risperidone. Adherence was higher and the relapse rate was lower for long-acting injectable than oral risperidone (relapse rate, 5.0% vs 32.7%, respectively), suggesting that long-acting injectable antipsychotic preparations may offer substantial benefit in early schizophrenia. In an Editorial, Carpenter and Buchanan discuss the role of injectable antipsychotics in our armamentarium.

Editorial 745

Paliperidone Palmitate 3-Month Formulation for Schizophrenia 830

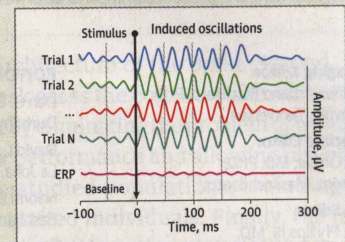
Treatment nonadherence and subsequent relapse are common challenges for patients with schizophrenia; long-acting injectable antipsychotic formulations may help address this problem. In a randomized placebo-controlled double-blind multicenter clinical trial, Berwaerts and coauthors studied the safety and efficacy of a novel 3-month formulation of paliperidone palmitate in schizophrenia. This formulation, which requires only 4 administrations per year, significantly delayed relapse compared with the placebo and its tolerability was similar to other marketed paliperidone formulations.

Editorial 745

Continuing Medical Education jamanetworkcme.com

Clinical Review & Education

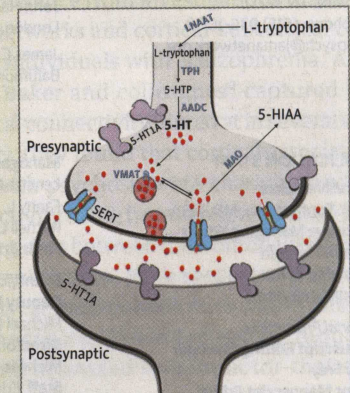
Special Communication



840 Neural Oscillations and Synchrony in Brain Dysfunction and Neuropsychiatric Disorders: It's About Time

DH Mathalon and VS Sohal

Neuroscience and Psychiatry



845 Serotonin States and Social Anxiety
MB Stein and AM Andrews

851 Correction

Departments

742 Staff Listing

830 CME Article

853 Classified Advertising

854 Journal Advertiser Index

855 Contact Information

856 CME Questions

Instructions for Authors
www.jamapsychiatry.com/public/instructionsforauthors.aspx